

building paper sisalkraft® 822

SISALKRAFT® 822

Description

Waterproof building paper for temporary uses.

Applications

1. Concrete Shuttering.
2. Floor Separation Layer.
3. Temporary Protection (*not shown*)

Technical:

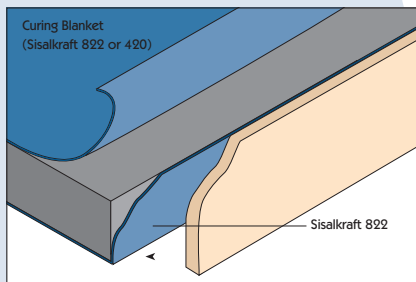
Accreditation: BS1521/B2

Water resistance >3 hours

Roll specification: 1mx100m / 9kg/roll
2mx100m / 19kg/roll

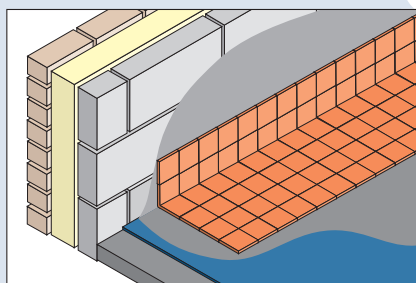
Suitable tapes: Double sided butyl, plastic or foil faced self-adhesive tapes can be used.

Storage: Store rolls vertical in a clean, dry area - protected from flame sources.



1. Concrete Shuttering

- Install on shuttering black side to concrete.
- Allow 100mm overlaps.



2. Floor Separation Layer

- Lay black side to wet area to provide bond break under tiles or other floor finishes.
- For heavy duty uses, use two layers laid black side down. (eg between tarmac on concrete deck).
- Allow 100mm overlaps.

3. Temporary Protection

- Lay black side down over decorative surface (ie. carpet / tile etc).
- Overlap and tape joints if necessary.



for further information call
A. Proctor Group:
01250 872261

A. Proctor Group.
The Haugh, Blairgowrie,
Perthshire, PH10 7ER



Manufactured by:

BSK

rt f S Smith | sfcs

Batch Number