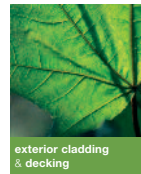




beaumont
...naturally



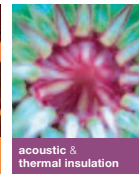
exterior cladding
& decking



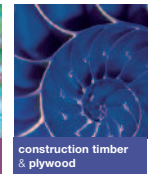
interior joinery
& floorings



fencing &
landscaping materials



acoustic &
thermal insulation



construction timber
& plywood

for responsible timber product supply

ENGINEERED tru-stud

‘designed to be straighter’



Introduction

Tru-stud engineered battens and studs are "finger jointed" and kiln dried to a target moisture content of 14-16% (+/- 2%), designed to give superior performance and minimise movement.

This will reduce on site construction time and minimise costly call backs and complaints saving time and money. The main benefits are reduced waste, no rejects and no twisting.

Product Information

Northern European Origin

European Whitewood (*Picea abies*) supplied from either FSC or PEFC certified resources.

Features & Benefits

- Kiln dried strength graded to C24 as per standard EN 14081 excluding dead knots, knot holes, in-grown bark, splits, wane, rot & worm hole.
- Finger jointed as per standard EN385 in length to aid stability, reduce defects and maintain straightness.
- Planed with tolerance in accordance with standard EN 336.
- 45 x 45mm square edge.
- 45 x 70mm and 45 x 95mm eased edge.

Treatment

Vacsol Aqua 6108 treated and protected from moisture influence during 60 years if used correctly.



Glue

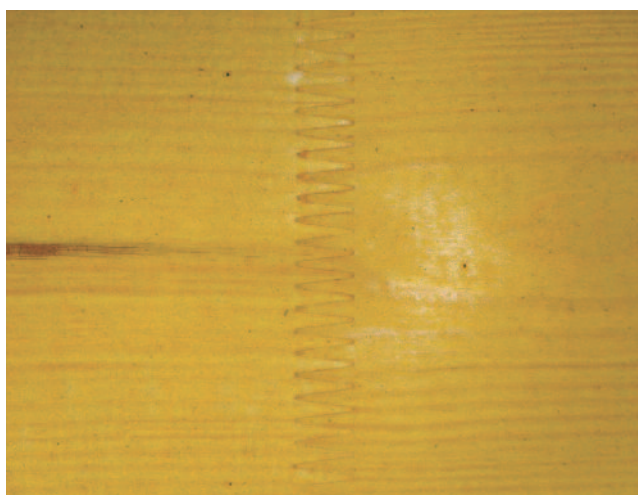
Purbond-HB530 polyurethane for indoor and outdoor exposure.

Recommended Use

Indoor.

STANDARD
DIMENSIONS

DIMENSION	LENGTHS
45 x 45mm	2.4m/3.0m/3.6m
45 x 70mm	2.4m/3.0m/3.6m
45 x 95mm	2.4m/3.0m/3.6m



Riverside Sawmill,
Hoddesdon
t: 01992 460000
f: 01992 460020

The Crown Estate Yard,
Ascot
t: 01344 874137
f: 01344 874139

Wycombe Town Depot,
High Wycombe
t: 01494 521421
f: 01494 522866

www.beaumontforest.co.uk

