

PROFLOOR ACTIV BATTEN

DESCRIPTION

A composite batten utilising a unique vertically oriented fibre which has been designed to improve the acoustic performance of concrete and timber frame floors. The enhanced performance levels will help satisfy Building Regulations requirements and in the 'deep' batten format will satisfy the requirements of Robust Details FFT1 for timber floors E-FT-1, E-FT-2 and E-FT-3.

KEY FEATURES

- Designed to reduce both airborne and impact sound performance.
- Single Batten for use in main floor area, perimeters, kitchens and bathrooms.
- High performance resilient layer – 13mm.
- Unique vertical oriented fibres act like springs.
- Limited long-term deflection or 'creep' ensures sustained performance.
- 3.6m length batten for quicker installation.
- Moisture resistant impregnated battens are available.

ADVANTAGES

- Ideal for both new build and refurbishment
- Significantly reduces impact and airborne noise pollution in multi level buildings.
- Supremely versatile, making it suitable for most domestic flooring applications.
- Easy and fast to install to joisted or concrete floors (pre-cast or in situ)
- Floors can be used immediately after installation.
- Designed to last the lifetime of the floor.
- Non load bearing partition walls can be erected on the finished acoustic floor where a double batten run has been positioned below.

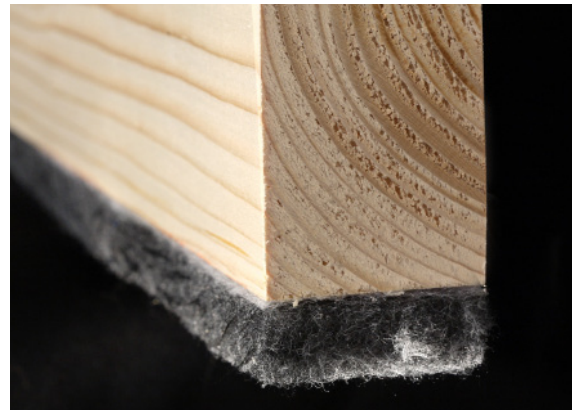
PHYSICAL PROPERTIES

Standard Sizes:

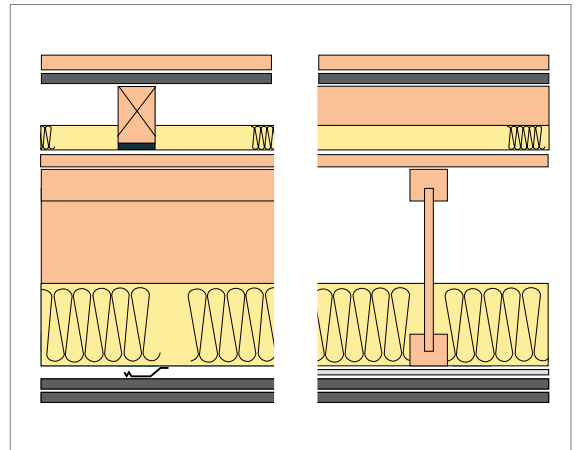
58mm x 45mm x 3600mm length
72mm x 45mm x 3600mm length

Flanking Strip:

100mm wide x 5mm thick (10m rolls)
125mm wide x 5mm thick (10m rolls)
150mm wide x 5mm thick (10m rolls)



A composite batten which has been designed to improve the acoustic performance of concrete and timber floors.



Robust details E-FT-1

Tested floor construction (RD appendix C)
Airborne: $\Delta R_w + C_{tr} = 15 \text{ dB}$ Impact: $\Delta L_w = 19 \text{ dB}$

Concrete Floor Construction (RD Appendix D)
Impact: $\Delta L_w = 24 \text{ dB}$

ROBUST DETAILS

FFT 1 Resilient composite deep batten system Suitable for use on the following RD floors:	<ul style="list-style-type: none"> • E-FT-1 (using 72mm batten) • E-FT-2 (using 72mm batten) • E-FT-3 (using 72mm batten) • E-FS-2 (using 72mm batten)
FFT 3 Resilient composite batten system Suitable for use on the following RD floors:	<ul style="list-style-type: none"> • E-FC-1 • E-FC-2 • E-FC-7 • E-FS-1



TECHNICAL SERVICES

The A Proctor Group's technical back-up has always been an integral part of our strategic development, with an outlook based on advanced technical solutions, rather than commodity driven. Our dedicated technical team is focussed on providing high quality advice and support to our customers all the way from drawing board to site.

Our experienced in-house technical staff are fully trained on industry-standard software and procedures from across our product ranges allowing our customers to specify and install our products safe in the knowledge that we will assist fully throughout the process.

ON-SITE & LABORATORY ACOUSTIC TESTING

Our in-house acoustics laboratory provides facilities for the testing of airborne and impact sound transmission for our own product development and as a stand-alone facility for clients wishing to obtain acoustic data on their products.

Site sound insulation testing is available to clients for both walls and floors as required by Building Regulations and as part of an assessment for residential conversion on the existing building prior to redevelopment. This allows us to provide tailored advice which can significantly reduce the risk of failure following completion and often reduce the level of material and remedial measures necessary to pass a sound test.

BATTEN OVERLAY DRAWINGS

Layout drawings for batten systems showing positioning of battens and giving a total quantity. Provided in CAD as overlay.

ACOUSTIC FLOORING TAKE-OFFS

Quantity takeoffs for acoustics deck and batten systems from plan, including estimates for glues, mineral fibre quilts, flanking strip etc.



On-site and Laboratory Acoustic Testing

PROFLOOR ACTIV BATTEN RELATED ACCESSORIES

PROFLOOR FLANKING STRIP

Available in 5mm, 7mm & 10mm thickness. Various widths to suit Profloor Systems.

PROFLOOR ADHESIVE 1LTR

Water based PVA adhesive. Size 1 litre bottle.



Profloor Flanking Strip



Profloor Adhesive 1Ltr